



CORPORATE GROUP PACKAGE OFFER

# MINDSHIFT ESCAPE ROOMS

246 PULTENEY ST ADELAIDE

EMAIL: [ENQUIRIES@MINDSHIFTESCAPEROOMS.COM.AU](mailto:ENQUIRIES@MINDSHIFTESCAPEROOMS.COM.AU)

PHONE: 08 82 32 82 08





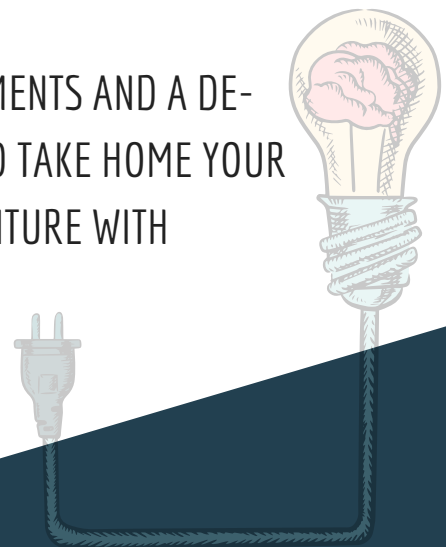
WELCOME TO THE NEW WORLD OF CORPORATE TEAM BUILDING! WE'VE BEEN WAITING FOR YOU!

WE CAN PROVIDE FOR YOUR NEXT GROUP MEETING, A FRIENDLY, WELCOMING HOST TO GREET YOU AT THE DOOR WHERE YOU'LL FEEL PART OF THE ACTION IMMEDIATELY INSIDE OUR 40'S THEMED LOBBY.

AFTER A SHORT PRE-GAME BRIEF, OUR STORY TELLING GAME MASTERS WILL TAKE YOU ON A JOURNEY LIKE NO OTHER, SETTING THE SCENE WITH YOUR VERY OWN OBJECTIVE.

WITH VICTORY IN SIGHT, HIGH FIVE YOUR TEAM AS YOU JUMP BACK INTO REALITY WHERE WE WILL BE WAITING FOR YOUR RETURN!

CLOSE OUT YOUR TIME WITH OPTIONS OF LIGHT REFRESHMENTS AND A DE-BRIEF OR TIME AT OUR COMPLIMENTARY PHOTOBOOTH AND TAKE HOME YOUR PRINTED PHOTOS AS A MEMENTO OF YOUR EXCITING ADVENTURE WITH MINDSHIFT ESCAPE ROOMS!



# MINDSHIFT ESCAPE ROOMS



IMPROVE  
COMMUNICATION  
SKILLS



WORK TOWARDS A  
COMMON GOAL

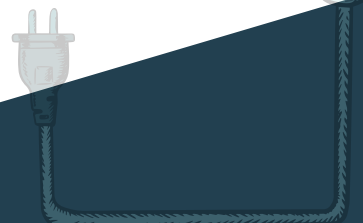


DISCOVER  
STRENGTHS

UNLOCK TEAM DYNAMICS



PROVIDE UNIQUE GROUP  
EXPERIENCE





OUR ROOMS ARE DESIGNED FOR EITHER SINGLE TEAMS OF UP TO 6 PLAYERS, OR WITH MULTIPLE ROOMS TO OFFER, WE CAN MANAGE LARGER GROUPS OF UP TO 70 PLAYERS IN A SINGLE SESSION!\*

AS THE ONLY ESCAPE ROOM IN ADELAIDE WHO CAN OFFER MEDIUM SIZE GROUPS ALL PLAYING THE SAME MYSTERY, AT THE SAME TIME, YOUR TRAINING NEEDS ARE MET WITH POST GAME GROUP DISCUSSION OPTIONS!

WITH UP TO 24 PLAYERS IN OUR BERMUDA ESCAPE! & 24 PLAYING HUNTING BIGFOOT, GUESTS CAN EXPERIENCE THE SAME FUN, THE SAME MYSTERY, IN A DUELING, COMPETITIVE SPIRIT OF OUR TEAM SWAP FORMAT PLUS WE OFFER OTHER ROOMS.

IF YOU ARE LOOKING FOR CATERING OPTIONS, YOU CAN CATER YOUR OWN LUNCH/BREAKFAST\*\*

OR WE CAN ASSIST YOU WITH OUR IN HOUSE CATERING.

Morning/afternoon tea only available for group sizes 18 ppl - 48 ppl. catering not available for groups 48ppl or more

\*\* BYO catering (no kitchen facilities) + clean up fee applies







## Catering options on offer

2 hour experience catering options included in the package -

**Afternoon Tea Platter** - Traditional favourite of warm, home made style pies, pasties and sausage rolls with selection of South Australian sauces + chutneys

\*vegetarian pasties available on request

**Morning Tea Platter** - Ramp up the energy levels before the game with our exclusive house made slices, brownies, cakes and selection of fresh fruit

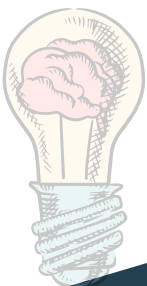
We also offer as part of our 2 hour experience, freshly ground coffee and a choice of speciality teas + selected juices.

Casual catering option - add to your game or game and drink only packages

**Grazing Boards** - a generous selection of cheeses, charcuterie, fresh and dried fruits. House made crackers and dips to enjoy\*

BYO catering? No problems! We will set up tables with included napery + plus clean up for \$50.00

\*grazing boards serve up to 6 people





## PRICING

### CHOOSE YOUR EXPERIENCE

#### GAME ONLY

1.5 HOUR EXPERIENCE

8+ PLAYERS

\$32/pp

1 x ESCAPE ROOM EXPERIENCE (1 HOUR)

Includes 15 mins preamble and option to debrief after the game

Photobooth included. Bar facilities available. Optional Extras available.

#### GAME + DRINK

1.5 HOUR EXPERIENCE

8+ PLAYERS

\$37/pp

1 x ESCAPE ROOM EXPERIENCE (1 HOUR)

Includes 15 mins preamble and option to debrief after the game PLUS your choice of either a welcome OR post game selected alcoholic (or non alcoholic) beverage.

Photobooth included. Optional Extras available

#### 2 HOUR CORPORATE GROUP EXPERIENCE

18-48 PLAYERS

\$50/PP

1 X ESCAPE ROOM EXPERIENCE (1 HOUR)

YOUR CHOICE OF MORNING OR AFTERNOON TEA

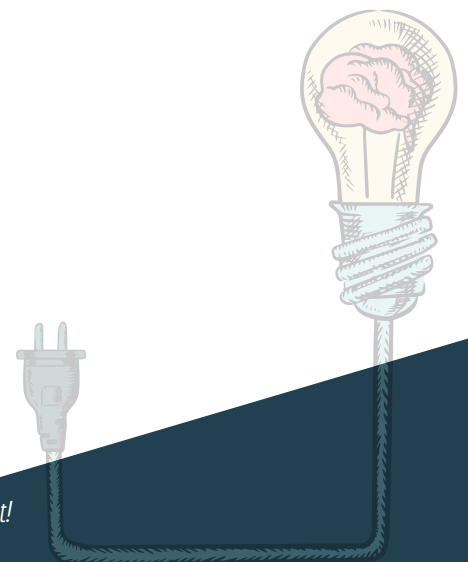
FRESHLY GROUND COFFEE + CHOICE OF SPECIALITY TEAS

EXCLUSIVE VENUE USE FOR TWO HOURS. OPTIONAL EXTRAS AVAIL.

#### OPTIONAL EXTRAS

- \$5/PP ADD A POST OR PRE GAME ALCOHOLIC BEVERAGE (SELECTED BEERS AND/OR WINES) TO ANY PACKAGE
- ADD A CASUAL GRAZING BOARD TO YOUR GAME OR GAME+DRINK OPTION FOR \$70.00

*Sessions include a dedicated, qualified event planner to assist with helping you create the perfect event!*





WITH SESSIONS AVAILABLE EVERY 1.5 HOURS THERE'S SURE TO BE A TIME TO SUIT YOU AND YOUR TEAM!

MONDAY - FRIDAY 9.30AM - 3.30PM

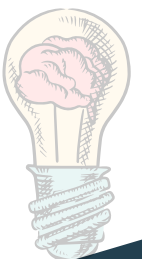
MORE THAN 70 PLAYERS? WE PROVIDE SOME IDEAS!

NEED SOMETHING BESPOKE? TALK TO US AND LET OUR QUALIFIED, IN-HOUSE EVENT PLANNER ARRANGE THE PERFECT EVENT!

**IF THIS SOUNDS LIKE SOMETHING THAT WOULD REALLY SUIT YOUR TEAM TO ENHANCE ITS ENGAGEMENT, BOOST MORALE AND UNCOVER THEIR GROUP DYNAMIC, THEN PLEASE FEEL FREE TO CONTACT US ON 08 82328208**

***"ENTER THE WONDER THAT IS MINDSHIFT ESCAPE ROOMS, LEAVE WITH THE KNOWLEDGE OF TIME WELL SPENT"***

Terms and conditions apply. Please see our website for full T&C







# AWESOME THEMES



Can you decode the mysteries of the Bermuda Triangle and return to your own dimension? Will time and space wait for you? Or will you vanish forever like so many before?



A global apocalypse imminent! Humanity's only chance rests upon a team of intrepid millennial time travellers going back in time to change the course of history - and thereby the future. Are you brave enough to accept the challenge?

PLUS MANY MORE THEMES ARRIVING THIS JULY!

