



Mindshift Escape Rooms

246 Pulteney St
Adelaide SA 5125
08 82 32 82 08
enquiries@mindshiftescaperooms.com.au

Professional Development Session

OVERVIEW

Professional development through a problem solving environment.

Applied to a team setting, creating a division of roles to provide clarity and how your contributions align with the goals set by the team to ensure its success.

PROJECT GOALS

1. Collaboration - Create team settings with the division of roles and how your contributions align with the goals set by the team to ensure its success.
2. Communication - Nurture and build personal connections to strengthen team bonds
3. Support - Encouraging fact-based decision-making to remove emotion and personal attachment
4. Leadership - provide opportunity for leadership through building alignments and growing the capabilities of others.

PROJECT METHODOLOGY

Team-based learning where participants discover clues, solve puzzles, and accomplish tasks in one or more rooms in order to attain a specific goal in a limited time.

DEBRIEF

The debriefing is an important consideration, to make sure that participants are fully informed about their experience from their problem solving experience. It enables a team to self-correct, collaborate, discuss and enhance their performance. The debrief will explore what were the most effective and ineffective strategies used throughout the session? Will staff do anything differently in the future? Furthermore, extracting from the teams if there were specific people needed to depend upon to solve certain challenges? How did participants feel about this type of interdependence.

IDENTIFY OPPORTUNITIES

Utilize findings from the experience and identify opportunities for improvement based on the four key areas of Collaboration, Communication, Support and Leadership. Opportunities for improvement will be identified based on assessing the lower performing areas. Participants will be asked to define specific action steps that they can apply in the workplace.

PROJECT FEE

Starting from \$29/pp - 1 hour experience only

OR

\$38/PP - 2 hours includes morning or afternoon tea

Multiple start times available - see example below

1.45: Arrival onsite for orientation

1.50: Introduction meeting covering the objectives and methodology used

2.00-3.00: Participation in 1-hour team-based problem solving environment

3.00-3.45pm: Debrief facilitation, afternoon tea and refreshments

Includes self service Nespresso Coffee station + selected teas + juice

Morning Tea - A selection of sweets, slices, cakes, warm scones with SA jam and cream and fruit

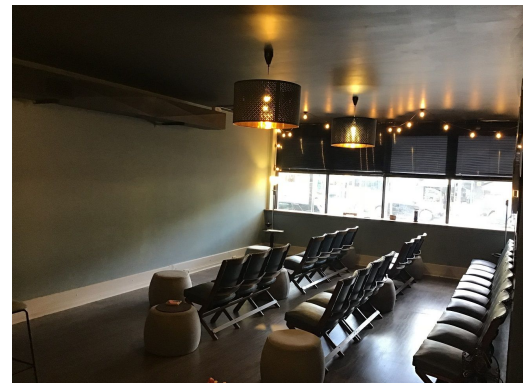
Afternoon Tea - A selection of hot, house made pies, pasties and sausage rolls with SA sauces and chutneys.

** vegetarian pasties available on request*

Add \$300 to hire out our entire venue 9am - 4pm with 20+ participants booked in conjunction with package. Incl Projector + screen. Valid Mon - Fri.



Self Service Nespresso



Theatre style seating



Relaxed or banquet seating